

HTMLPro 1.50 Contents

Thankyou for trying out HTMLPro 1.50 for Windows 3.1!

Select one of the links below to be magically transported there...

[Introduction to HTMLPro](#)
[Installation & Configuration](#)
[The Main Window](#)
[The Menu Bar](#)
[The Toolbar](#)
Tools
 [The Image Map Wizard](#)
 [The Site Manager](#)
 [The Color Wizard](#)
 [The Table Wizard](#)
Registration
[New This Version](#)
[Coming in Version 1.60...](#)

If you have any more problems using HTMLPro that simply cannot be answered using this help file, please contact our technical support staff at jd@theoffice.net and they will help to answer your query.

This help file was created with [HelpScribble](#).

Introduction to HTMLPro

Welcome to HTMLPro, the easy to use Windows HTML Editor. Although aimed specifically at HTML Professionals such as web designers, HTMLPro comes with a number of features to make HTML creation easy, whether you know your logical tags from your physical tags or not!

Let's take a look at some of those great features...

- Easy Interface
If you've ever used a Windows application you'll be right at home with HTMLPro. The interface is similar to many Windows 3.11 applications, with a standard MS Office-style Toolbar. Plus, with Multiple-Document Interface (MDI) support, HTMLPro leaves the competition writhing in agony in the gutter.
- Powerful tools
Yes sir, HTMLPro is tool-laden; these will help make your page creation a little easier without holding your hand *too* much. The Image Map Wizard will make making CSIMs a doddle; the Site Manager lets you keep track of your pages, and the Color Wizard lets you preview colour schemes before you commit yourself; it'll even create the BODY statement for you! Let's not forget the simple but effective table wizard....
- And for the first timer...
New to HTML? Don't panic. Not only does HTMLPro come with an "HTML Newcomer's Guide" to get you familiar with HTMLPro, it also comes with a number of templates; ready-made HTML documents with all the complicated tags laid out for you. All you have to do is fill in the specific details! And, if you're really stuck, use the Document Wizard to do *everything* for you.
- Inexpensive
HTMLPro is shareware; you can try it for *free* for 30 days. If you like it, you register it for a cost of only £20 Sterling; that's about \$30. There's no reason not to register with prices as great as these; plus, when you register, you'll get rid of that horrible nag screen and increase loading time. You'll also be liable for a FREE copy of the full 32-bit version when you register. What more could you ask for?

Contacting Jaguar Development

Jaguar Development can be reached in one of the following ways...

Snail-Mail:

Jaguar Development c/o E. Lecky-Thompson
20 Cole End Lane
Sewards End
Saffron Walden

Essex CB10 2LQ

Phone: 01799 526948

Fax: 01799 520823

E-Mail: jd@theoffice.net (as a team)

Ed: ed@comports.com

Doug: bug@dial.pipex.com

Richard: richard@timekeep.demon.co.uk

Alex: alexander.peel@pmbbs.demon.co.uk

Please mark any registrations clearly to ensure fast handling.

This help file was created with [HelpScribble](#).

Installation & Configuration

1. System Files

Installation is fairly simple. If you're reading this, you'll have already unzipped the archive. That's good, that's the first step.

Now you need to copy a couple of files over to your **WINDOWS\SYSTEM** directory, namely **COMMDLG.DLL** and **CMDIALOG.VBX**.

If you receive a message asking you if you wish to overwrite your existing copies, you'd better click 'No' for the moment. If you encounter problems running HTMLPro, you should re-copy, this time choosing 'Yes'.

2. Adding program icons

If you're running Windows 3.1, Windows for Workgroups 3.11 or Windows NT version 3.51 or below, use the Program Manager to add a new program group called 'HTMLPro for Windows.' Then create an icon in this group which points to **HTMLP.EXE** in the directory you installed HTMLPro into.

If you're running Windows 95, Windows NT version 4.0 or above, or the latest version of SoftWindows, you should add a shortcut in the 'Programs' group of the Start Menu by right-dragging **HTMLP.EXE** into a suitable folder then clicking '**Create shortcut here.**'

3. Running HTMLPro for the first time

Time to run HTMLPro for the first time now. Under Windows 3.1/WFW 3.11/WinNT 3.51, open the program group and double click on the icon.

Under Windows 95/Win NT 4/Softwindows, click 'Start', then 'Programs', then locate HTMLPro and click once on the menu item.

The program should load; this should take no more than 5 seconds. Once the splash screen has disappeared, a delay window will pop-up for about 5 seconds, counting down and asking you to press 'OK'. This is to encourage you to register. Once you have done this, it is time to configure HTMLPro.



Click on the button shown above with the hand icon. In the first field, enter the path to HTMLPro, e.g. d:\vb\htmlpro. In the second field, enter the path and filename of your WWW browser, if you have one, e.g. c:\progra~1\netscape\navigator\program\Netscape.exe. Note it is very important to enter standard DOS filenames here, as this is a 16-bit application. In the third field, enter your full name. This will be attached as

a copyright notice to every document you create.

You need not change the font at this time; just click 'OK'. You must now restart HTMLPro, so quit by clicking 'File' then 'Exit'. Once restarted, HTMLPro is now configured. Congratulations!!

One more thing. If you are upgrading from a previous version which you had registered, the new copy WILL NOT BE registered automatically.

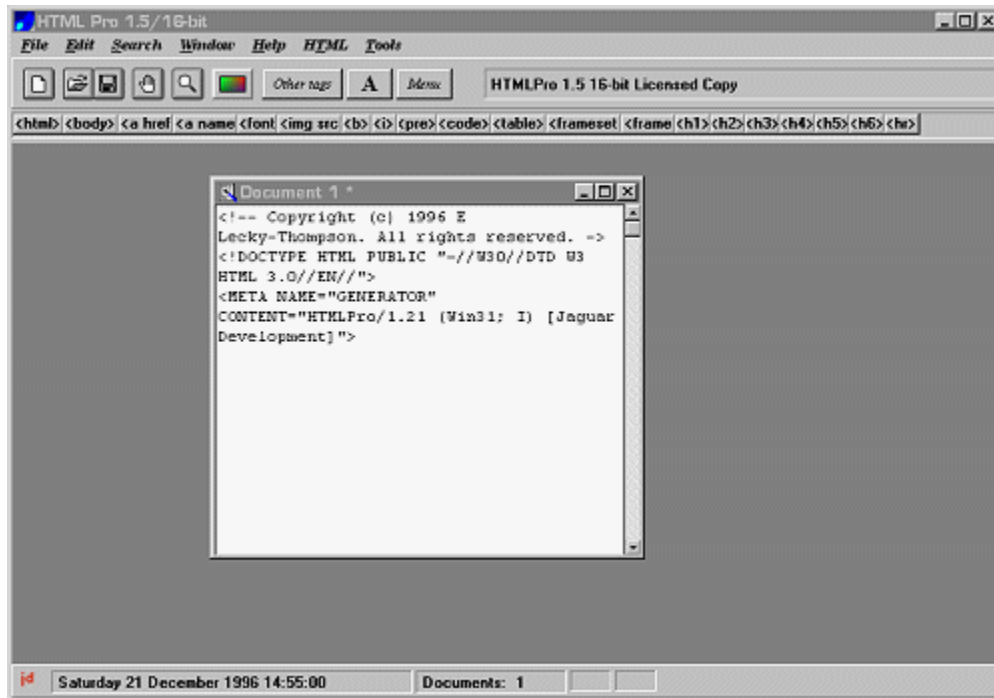
The registration code algorithm has changed. You should receive your new passcode through email very soon after release of HTMLPro 1.5.

To enter your new code, click 'Help' then 'Register'.

This help file was created with [HelpScribble](#).

The Main Window

If you're familiar with a standard Windows application then you'll be instantly at home with HTMLPro.



The system works on an MDI (Multiple Document Interface) system, which allows you to have several sub-windows open at once.

Windows can be managed using the 'Window' menu; a vital menu in HTMLPro.

Cascade Cascades the windows neatly.
Tile Vertical Tiles the windows vertically
Tile Horizontal Tiles the windows horizontally
Arrange Icons Arranges the minimized window icons

Also, when you have windows open, items such as

1 D:\VB\HTMLPRO\OTHER.HTM
./ 2 D:\VB\HTMLPRO\TEMP.HTM

The item with the tick is the active document. To select another document, click on its title.

The Splash-Menu

This is a large, blue menu which pops up whenever you start HTMLPro. This allows you to access the three most

common features of HTMLPro; New, Open and New From Template. To select an item, click on the text (which should highlight when you move the mouse over it.)

This help file was created with [HelpScribble](#).

The Menu Bar

The menu bar lets you control HTMLPro.

File ***Edit*** ***Search*** ***Window*** ***Help*** ***HTML*** ***Tools***

File - Disk filing and program control

- Configure - Configure HTMLPro
- Document Wizard - Create documents with a wizard to help you
- New from Template - Creates a document based on a template
- New - Creates a document
- Open - Opens a document
- Save - Saves a document
- Save As - Saves a document under a new name
- Exit - Exits HTMLPro

Edit - Text Editing

- Clear - Deletes the selection
- Cut - Copies the selection to the clipboard and then deletes

it from

the document

- Copy - Copies the selection to the clipboard
- Paste - Pastes in the new selection

Search - Text Search

- Find - Finds text in the current document

Window - Window control

- All Items - See Previous Topic

Help - Gives you help

- Contents F1 - Brings up this help file
- Tips - Brings up the 'did you know' window
- About - Displays program information
- Register - Registration details and passcode entry

HTML - Contains HTML Commands

- All Tags - Self explanatory
- Preview in Browser - Launches the current document into your web browser

Tools - Useful Editing Tools

- Site Manager - Used for looking after your web site
- Image Map Wizard - Used for creating client side image maps
- Color Wizard - Used for previewing color schemes
- Table Wizard - Used for creating tables

The Toolbar

The HTMLPro toolbar lets you access commonly used features in HTMLPro at the click of a button.



- 1 New Document
- 2 Open Document
- 3 Save Document
- 4 Configure HTMLPro
- 5 Checks your HTML Syntax for errors
- 6 Chooses a font foreground colour
- 7 Selects from user-defined tags
- 8 Selects the default window font
- 9 Opens up the splash-menu

This help file was created with [HelpScribble](#).

The Image Map Wizard

The image map wizard lets you create client side image maps quickly and easily. CSIMs are perfect nowadays; they require no special server privileges and are supported by around 80% of the world's browser market.

To create a map, open the image map wizard from the tools menu. Then follow the following steps.

- 1 Give the map a name; change 'map000' to something more legible. Note it cannot contain spaces.
- 2 Choose a .GIF to use in the image map by entering its name into the 'Filename' text box, then click Load
- 3 Define the areas you want on the map using the three tools, selectable using the buttons at the top of the screen (Circ, Rect & Polygon).
- 4 To define a circle, press and hold down the mouse button where the center of the circle should appear. Let go when you have defined the edge of the circle. You will then have to enter a URL for the circle's target.
- 5 To define a rectangle, press and hold at the point X1,Y1. Release at the point X2, Y2. Enter the URL when asked.
- 6 To define a polygon, press for each point of the polygon; when finished, click the right button. Enter the URL when asked.
- 7 To create the map code, click 'Create code'
- 8 Note you can delete map entries using the 'delete item' button on the list box.

The Site Manager

The site manager allows you to group your pages together into a 'site'.

NOTE: Each site must have it's own NAME and it's own BASE FOLDER. An example of a name is 'jagdev'; an example of a base folder is 'D:\WEBPAG~1\JAGDEV' - note the final missing slash.

To create a new site, click on the 'New' icon (labelled as a white piece of paper). You must then enter the details in the two text boxes.

To open an existing site, enter the details in the text boxes FIRST, THEN click on the 'Open' toolbar icon.

To save your site, check the details are entered correctly then click on the 'Save' icon.

To add a page to the site, click 'Add'. Note that every page must have a description as well as a filename; note that the filename is relative to the base folder. For example, 'INDEX.HTM' with a base folder of 'C:\JD' becomes 'C:\JD\INDEX.HTM'. It does not matter if the page does not exist at this time.

To delete a page from the site, click 'Delete'. Note that deleting does not actually delete the file, it just ungroups it.

To edit a page on the list, click on an item in the list box then click 'Edit Page'.

To close the site manager, use the control box (Win 3.1) or 'X' (in Win95)

This help file was created with [HelpScribble](#).

The Color Wizard

The color wizard allows you to preview certain color elements of a page before you commit yourself.

To change an element of the page, click on the 'radio button' for one of the 5 elements. Then either enter values directly, or use the sliders for Red, Green and Blue.

To set a background GIF, use the 'Filename' text box, using 'Browse' if you are unsure of the filename.

To see what it will look like, click 'Preview'. If you are happy, click 'Create BODY statement.'

You can save and load different combinations of color schemes using the 'Color Schemes' frame. Two or three color schemes have been provided with HTMLPro.

This help file was created with [HelpScribble](#).

The Table Wizard

The table wizard is very simple to use. Access it from the Tools menu.

To create a table, follow these steps.

- 1 Open the table Wizard
- 2 Enter the number of rows & columns in the table.
- 3 Enter the size of the border
- 4 Give the table a background color (leave it as #FFFFFF if you are unsure)
- 5 Click on 'use headings' if you want each column to have a header.
- 6 Click on OK
- 7 Edit the text that HTMLPro has created for you, that looks something like this:

```
<TABLE BORDER=0>
<TR><TD>[Your Cell Data Here]<TD>[Your Cell Data Here]<TR><TD>[Your Cell
Data Here]
<TD>[Your Cell Data Here]<TR><TD>[Your Cell Data Here]<TD>[Your Cell
Data Here]<TR>
<TD>[Your Cell Data Here]<TD>[Your Cell Data Here]<TR><TD>[Your Cell
Data Here]<TD>
[Your Cell Data Here]
</TABLE>
```

This, in its current state, produces the following:

```
[Your Cell Data Here][Your Cell Data Here]
[Your Cell Data Here][Your Cell Data Here]
[Your Cell Data Here][Your Cell Data Here]
[Your Cell Data Here][Your Cell Data Here]
[Your Cell Data Here][Your Cell Data Here]
```

Registration

Like a lot of apparently 'free' software, HTMLPro isn't actually free at all. It's **SHAREWARE**. That means you are welcome to try it for free for 30 days. After that time, if you don't like it, you wipe it. And that's that. If you want to continue using it, however, you have to register.

Registration costs a mere **£20.00**

To register, send a £20 cash to the following address. Be sure to include

- Your Postal Address
- Your Email Address
- Your Full Name **PRINTED VERY CLEARLY**

When we receive your registration, we will create you a code based on your full name you supplied. We will then email you back your registration code (along with a case-adjusted copy of your name) which you should then enter into HTMLPro using the 'Registration' window under 'Help'.

PLEASE SUPPORT THE SHAREWARE CONCEPT!!!

Jaguar Development's Address:

20 Cole End Lane
Sewards End
Saffron Walden
Essex
CB10 2LQ
ENGLAND

We guarantee SAME DAY DISPATCH OF YOUR CODE!

This help file was created with [HelpScribble](#).

New This Version

Since v1.2 (Update Release)

- Added file browse capabilities to the Color Wizard.
- Changed registration algorithm to silence the hackers for a while.
- We're on Tucows! (<http://www.tucows.com>)
- Added status bar.
- Bugs fixed.
- Programmable Templates; please see the file README.TXT for more details.
- Added a decent help file.

Since v1.0 (December 1996 Release)

- Added site manager to help with the management of full web sites, not just pages.
- Added the Image Map Wizard to help create Client Side Image Maps.
- Fixed 'preview in browser' bug; will prompt you to save first if you have not already saved.
- Changed splash screen.
- Color wizard vastly improved. New interface, now supports ready-made or custom-made schemes, and background GIFs (JPEG support coming soon).
- Added Table Wizard
- Updated documentation
- Ironed out a few more bugs (thanks for all emails concerning these)
- Streamlined code.

Since 0.9 (Beta Release)

- Fixed bugs
- Added Color Wizard with basic support for colors and so forth.
- Added help HTML document.
- Added more templates.
- Document Wizard

Since 0.1 (Concept Release)

- Too numerous to mention here; contact JD for a full list.

This help file was created with [HelpScribble](#).

Coming in Version 1.60...

Version 1.60 of HTMLPro will be a '32-bit Concept Release.'

This new version will therefore only function under Windows 95.

It will not be readily available; please wait for version 1.70 - the FULL 32-bit version.

Here is a short list of some of the more impressive features...

- Fully 32-bit
- Long Filename Support
- Full TCP/IP support - will upload to your web space server!
- New Installation routine
- Fully Windows 95 compliant.
- More Templates
- Better Document Wizard
- Better interface...

The rest of the features are being kept under wrapped, so it's WAIT AND SEE!!

Version 1.60 will be available January 3rd. Check the HTMLPro web site for more details:

<http://ds.dial.pipex.com/unleashed/htmlpro/>

HelpScribble

HelpScribble is a help authoring tool written by Jan Goyvaerts. This help file was created with the unregistered version of HelpScribble, which is why you can read this ad. Once the author of this help file is so honest to register the shareware he uses, you will not see this ad again in his help files.

HelpScribble is a stand-alone help authoring tool. It does *not* require an expensive word processor. (Only a help compiler as Microsoft likes keeping the .hlp format secret. Not my fault.)

Here are some of HelpScribble's features:

- The Setup program will *properly* install and uninstall HelpScribble and all of its components, including registry keys.
- Create, edit and navigate through topics right in the main window. No need to mess with heaps of dialog boxes.
- All topics are listed in a grid in the main window so you won't lose track in big help projects. You can even set bookmarks.
- Use the built-in Browse Sequence Editor to easily create browse sequences.
- Use the built-in Window Editor to change the look of your help window and create secondary windows.
- Use the built-in Contents Editor to create Windows 95-style contents files. Works *a lot* better than Microsoft's HCW.
- No need to mess with Microsoft's SHED: use the built-in SHG Editor to create hotspot bitmaps. Draw your hotspots on the bitmap and pick the topic to link to from the list.
- With the built-in Macro Editor you can easily compose WinHelp macros whenever needed. It will tell you what the correct parameters are and provide information on them.
- If you have a problem, just consult the online help. The help file was completely created with HelpScribble, of course.
- HelpScribble is shareware. However, the unregistered version is *not* crippled in any way. It will only add a small note to your help topics to encourage you to be honest and to register the shareware you use.

These options are very interesting for Delphi developers:

- If you are a component writer, use the Delphi Parser to build an outline help file for your component. Just fill in the spaces and you are done. (Try it if you do not believe me or just look at the help file you are reading now.)
- If you are an application writer, HelpScribble provides you with a property editor for the HelpContext property. You can select the topic you need from a list of topic titles or simply instruct to create a new topic. No need to remember obscure numbers.
- The property editor also provides a tree view of all the components on your form and their HelpContext properties. This works very intuitively. (Much nicer than those help tools that simply mess with your .dfm files.)
- HelpScribble can perform syntax highlighting on any Delphi source code in your help file.

HelpScribble is shareware, so feel free to grab your copy today from my web site at <http://www.tornado.be/~johnfg/>

